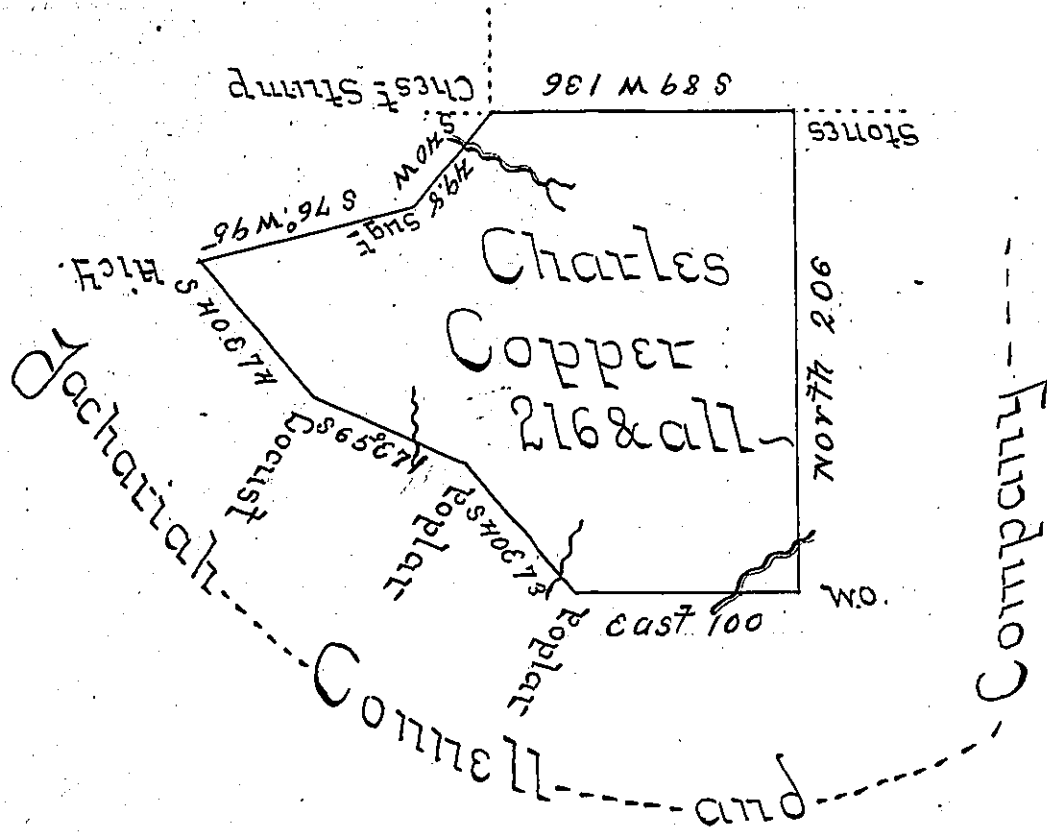


James Ross Edward Lynch



Situate on a Sugar-tree Ridge near the Top of Laurel  
 on the Waters of Laurel Run  
 Hill in Bullskin Township Fayette County and Sur-  
 veyed the 9<sup>th</sup> day of November 1796. In pursuan-  
 ce of a Warrant dated the 15<sup>th</sup> day of March 1787.

P. Alexander McClean Deputy

To Daniel Brodhead Esquire  
 Surveyor General

IN TESTIMONY that the above is a copy of the original remaining on file in  
 the Department of Internal Affairs of Pennsylvania, made  
 conformably to an Act of Assembly approved the 16th day of  
 February, 1833, I have hereunto set my Hand and caused  
 the Seal of said Department to be affixed at Harrisburg,  
 this thirteenth day of July 1904.

*Loach R. Perry*  
 Secretary of Internal Affairs.